



mv MISTRAL

Finnish flag, built by J.J. Sietas KG Schiffswerft GmbH u. Co., Germany 1999
 DNV GL +100 A5 E4 "Ro-Ro-Ship" "Equipped for carriage of containers" "SOLAS II-2, Reg. 19" MC E4 Aut.
 Finnish/Swedish ice class 1A Super, Call sign OJIX, IMO no. 9183788

Principal dimensions

Length over all	153,45 m
Breadth moulded	20,60 m
Draft summer	7,00 m

Tonnages

DWT on 7,00 m draft	7.438
GT London rules 1969	10.471
NT London rules 1969	3.142

Tank capacities

Fuel oil	840 m ³
MGO	153 m ³
Water ballast	3.963 m ³

Roro capacity

	Area	Lane meter	Max load
Weather deck	2.062 m ²	690 m	2,5 t/m ²
Main deck	1.878 m ²	620 m	5,0 t/m ²
Lower hold	967 m ²	315 m	8,0 t/m ²
Total	4.907 m ²	1.625 m	

	Volume	Deck height
Main deck	9.463 m ³	5,00 m
Lower hold	5.136 m ³	4,60 m
Total	14.599 m ³	

Container capacity on deck and reefer plugs

303 TEU or 141 FEU plus 21 TEU
 Stack load on deck 40/60 t per 20'/40' stack
 The vessel can also load 30'/45' and pallet wide (2.500 mm) containers
 50 reefer plugs on main deck and weather deck
 Reefer plugs 4 pole, 380/440 V, 50/60 Hz, 32 A

Cargo handling equipment

Stern ramp 14,00 m x 12,30 m (L x B), total load 200 t
 Stern ramp 14,00 m x 4,00 m (L x B)
 Fixed ramp main deck - tank top, slope <8°
 Fixed ramp main deck - weather deck, slope <8°
 Air drying plant for cargo holds

Accommodation for drivers

Accommodation for 12 drivers in 6 cabins

Machinery

Main engine Wärtsilä 12V46C, 12.600 kW with
 Variable frequency device for optimal fuel consumption at low speed
 Aux. engines 2 x 515 kW
 Shaft generator 1.400 kW
 Bow thruster 800 kW
 Stern thruster 495 kW
 Anti-heeling system
 Fin stabilizer plant

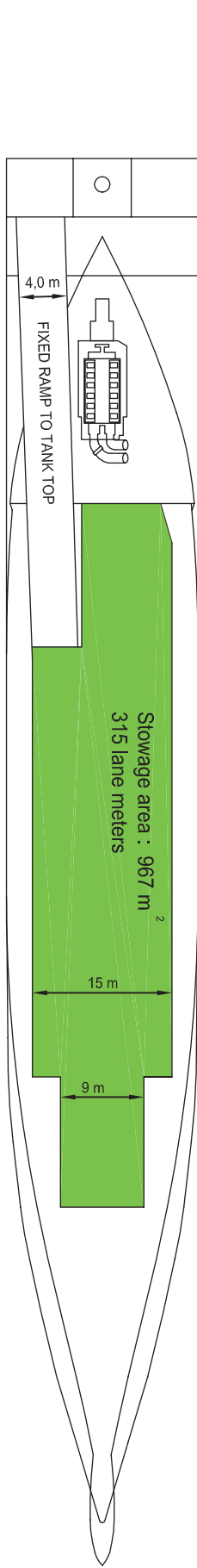
Speed and consumption per day

Service speed abt 20 knots on abt 48 t fuel oil
 Outside ECA vessel consuming IF380, inside ECA vessel consuming
 MGO/MDO or ULSFO
 Harbour consumption abt 2 t MGO

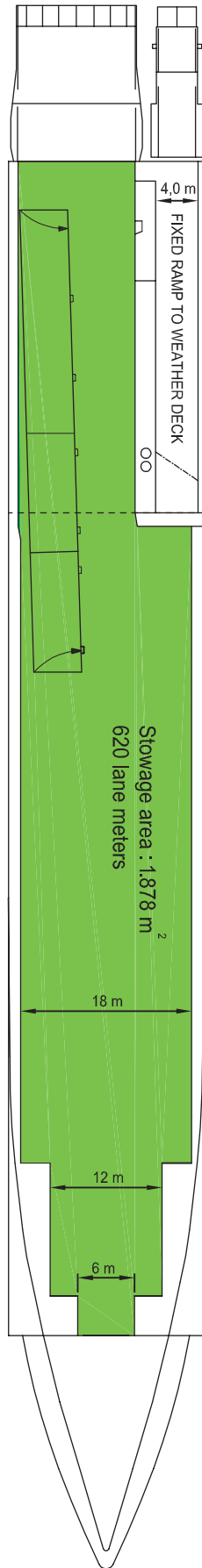
Typical cargo cases

Paper: 2.850 mt paper in lower hold + 3.900 mt paper on main deck + 400 mt bunker
Paper + containers: 2.850 mt paper in lower hold + 2.900 mt paper on main deck + 980 mt containers on weather deck (abt 70 pcs) + 400 mt bunker
Paper + trailers + containers: 2.850 mt paper in lower hold + 1.000 mt trailers on main deck (abt 40 pcs) + 1.960 mt containers on weather deck (abt 140 pcs) + 400 mt bunker
Please note that above cases are given as examples only. Actual maximum cargo for a specific voyage is always subject to exact cargo specification, vessel's trim and stability, port restrictions etc.

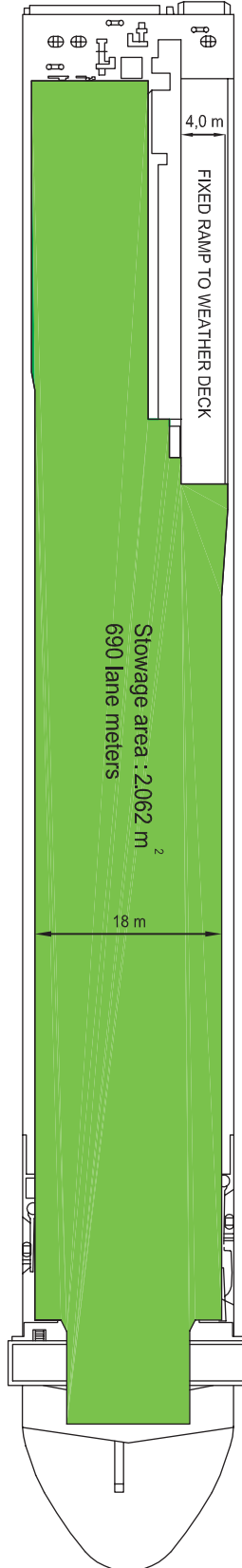
mv Mistral



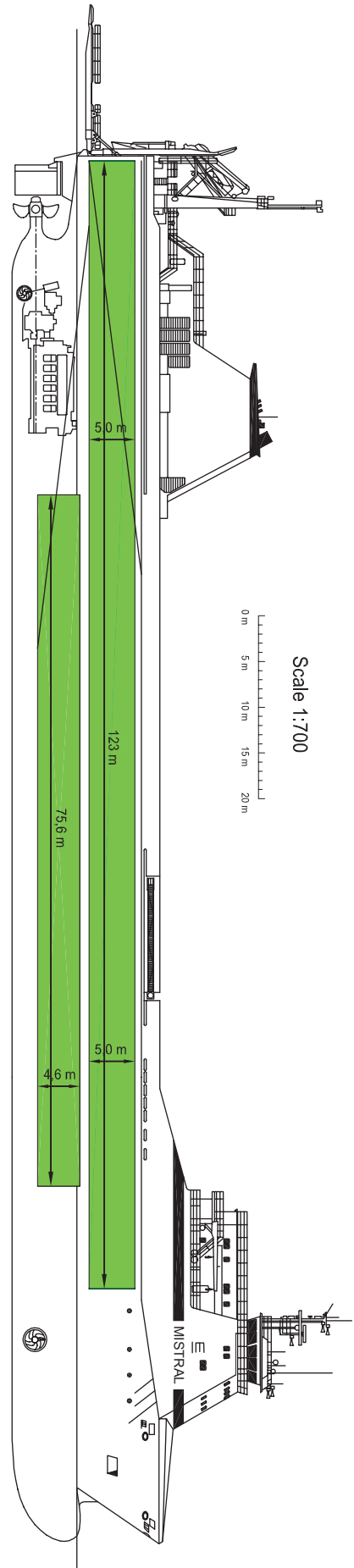
TANK TOP



MAIN DECK



WEATHER DECK



PROFILE

Scale 1:700